

# WHITE CLOUD SUBDIVISION PHASE 1

Located in  
the SE 1/4 Sec. 24, NE 1/4 Sec. 25 T.18N., R.2E., and  
the SW 1/4 Sec. 19, NW 1/4 Sec. 30 T.18N., R3E., B.M.  
Valley County, Idaho

### LEGEND

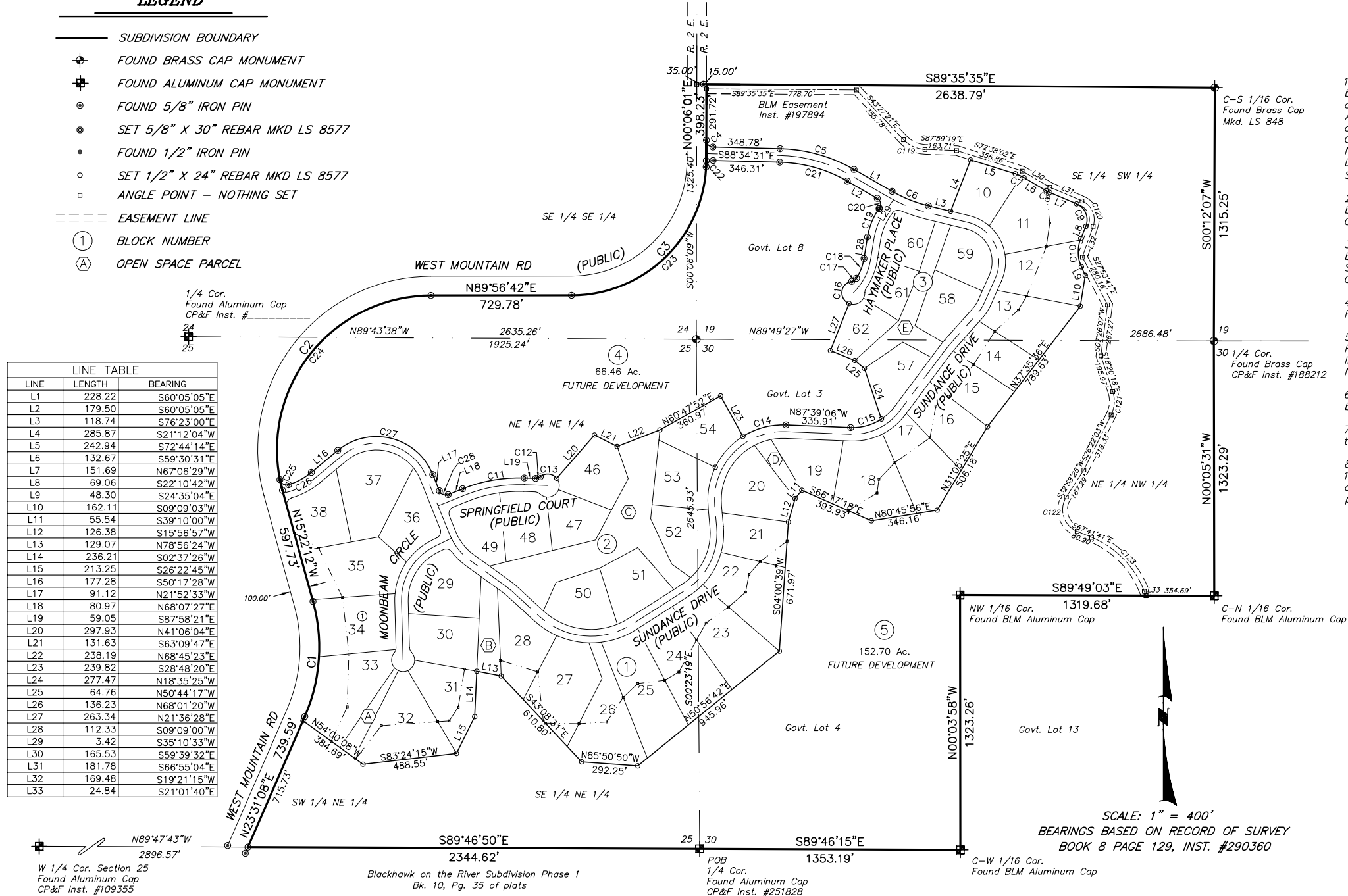
- SUBDIVISION BOUNDARY
- ⊕ FOUND BRASS CAP MONUMENT
- ⊕ FOUND ALUMINUM CAP MONUMENT
- ⊙ FOUND 5/8" IRON PIN
- ⊙ SET 5/8" X 30" REBAR MKD LS 8577
- FOUND 1/2" IRON PIN
- SET 1/2" X 24" REBAR MKD LS 8577
- ANGLE POINT - NOTHING SET
- - - EASEMENT LINE
- ① BLOCK NUMBER
- Ⓐ OPEN SPACE PARCEL

### NOTES

1. All properties shown on this Final Plat are subject to and governed by the provisions of the CC&Rs for White Cloud Subdivision, Phase 1, and the Articles of Incorporation and Bylaws for White Cloud Association, as these documents may be amended and supplemented, and which are being recorded concurrently with this Final Plat with the Office of Recorder of Valley County, Idaho, as Instrument Nos. \_\_\_\_\_ together with any additional Declarations pursuant to the General Declaration for White Cloud Subdivision and/or the Bylaws for White Cloud Association.
2. All properties shown on this Final Plat are subject to and governed by the White Cloud Design and Development Guidelines and the White Cloud Rules and Regulations, as may be amended or supplemented.
3. All properties shown on this Final Plat are subject to and governed by the provisions of Conditional Use Permit No. \_\_\_\_\_ White Cloud Subdivision, Phase 1, as issued and as may be modified by Valley County, Idaho.
4. There shall be no further division of any Lot depicted on this Final Plat.
5. Utilities have not been installed at the time of recordation of this Final Plat. Utilities will be completed as provided in the Declaration of Installation of Utilities being recorded with this Final Plat as Instrument No. \_\_\_\_\_ with Office of Recorder, Valley County Idaho.
6. All lots are being serviced by private wells and septic systems to be provided by the lot purchaser.
7. All roads and road rights of way depicted on the Plat are dedicated to the Public and after completion, will be maintained by Valley County.
8. The BLM Easement shown on this plat, filed as Instrument Number 187894, is a non-exclusive easement to the United States of America and its assigns to use and maintain for the sale of resources from public lands.

LINE	LENGTH	BEARING
L1	228.22	S60°05'05"E
L2	179.50	S60°05'05"E
L3	118.74	S76°23'00"E
L4	285.87	S21°12'04"W
L5	242.94	S72°44'14"E
L6	132.67	S59°30'31"E
L7	151.69	N67°06'29"W
L8	69.06	S22°10'42"W
L9	48.30	S24°35'04"E
L10	162.11	S09°09'03"W
L11	55.54	S39°10'00"W
L12	126.38	S15°56'57"W
L13	129.07	N78°56'24"W
L14	236.21	S02°37'26"W
L15	213.25	S26°22'45"W
L16	177.28	S50°17'28"W
L17	91.12	N21°52'33"W
L18	80.97	N68°07'27"E
L19	59.05	S87°58'21"E
L20	297.93	N41°06'04"E
L21	131.63	S63°09'47"E
L22	238.19	N68°45'23"E
L23	239.82	S28°48'20"E
L24	277.47	N18°35'25"W
L25	64.76	N50°44'17"W
L26	136.23	N68°01'20"W
L27	263.34	N21°36'28"E
L28	112.33	S09°09'00"W
L29	3.42	S35°10'33"W
L30	165.53	S59°39'32"E
L31	181.78	S66°55'04"E
L32	169.48	S19°21'15"W
L33	24.84	S21°01'40"E

CURVE	RADIUS	LENGTH	TANGENT	DELTA	BEARING	CHORD
C1	900.00	610.87	317.73	38°53'20"	N04°04'28"E	599.21
C2	800.00	1470.47	1048.53	105°18'54"	S37°17'15"W	1272.04
C3	700.00	1097.66	698.11	89°50'41"	N45°01'22"E	988.61
C4	35.00	54.17	34.20	88°40'32"	S44°14'15"E	48.92
C5	810.00	402.78	205.64	28°29'36"	N74°19'48"W	398.64
C6	715.00	203.44	102.41	16°18'08"	S68°13'56"E	202.75
C7	215.00	49.64	24.93	13°13'43"	N66°07'23"W	49.53
C8	160.00	21.22	10.63	7°35'58"	S63°18'30"E	21.21
C9	90.00	139.95	88.59	89°05'46"	N22°22'11"W	126.27
C10	185.00	150.99	79.98	46°45'45"	S01°12'11"E	146.83
C11	785.00	327.50	166.17	23°54'13"	S80°04'33"W	325.13
C12	35.00	25.98	13.62	42°32'13"	N70°45'33"E	25.39
C13	60.00	95.72	61.49	91°24'06"	N84°48'30"W	85.88
C14	390.00	235.39	121.41	34°34'56"	S75°03'26"W	231.84
C15	270.00	168.45	87.07	35°44'47"	N74°29'16"E	165.73
C16	60.00	157.50	227.08	150°23'56"	S06°48'25"W	116.02
C17	35.00	30.38	16.22	49°43'50"	N57°08'28"E	29.43
C18	275.00	111.00	56.26	23°07'33"	N20°42'46"E	110.24
C19	355.00	160.71	81.75	25°56'15"	S22°12'26"W	159.34
C20	35.00	58.19	38.37	95°15'38"	N12°27'16"W	51.72
C21	740.00	367.97	187.87	28°29'26"	N74°19'48"W	364.19
C22	35.00	54.19	34.22	88°42'40"	S47°04'09"W	48.94
C23	700.00	1065.73	666.97	87°13'53"	N46°19'46"E	965.75
C24	800.00	1413.21	974.17	101°12'49"	S39°20'17"W	1236.49
C25	35.00	58.80	39.05	96°15'41"	S59°33'58"E	52.13
C26	350.00	135.48	68.60	22°10'43"	N61°22'50"E	134.64
C27	315.00	593.24	432.80	107°54'17"	N75°49'42"W	509.37
C28	35.00	54.98	35.00	90°00'00"	S66°52'33"E	49.50
C119	161.40	125.45	66.08	44°31'58"	S65°43'20"E	122.31
C120	105.30	158.55	98.66	86°16'19"	N23°46'54"W	143.99
C121	160.00	124.84	65.79	44°42'21"	N04°00'53"E	121.70
C122	121.80	214.00	146.89	100°40'06"	S17°21'38"E	187.52
C123	494.00	402.36	213.09	46°40'01"	N44°21'41"W	391.33



N89°47'43"W  
2896.57'  
W 1/4 Cor. Section 25  
Found Aluminum Cap  
CP&F Inst. #109355

S89°46'50"E  
2344.62'  
Blackhawk on the River Subdivision Phase 1  
Bk. 10, Pg. 35 of plats

POB  
1/4 Cor.  
Found Aluminum Cap  
CP&F Inst. #251828

C-W 1/16 Cor.  
Found BLM Aluminum Cap

SCALE: 1" = 400'  
BEARINGS BASED ON RECORD OF SURVEY  
BOOK 8 PAGE 129, INST. #290360

### MONUMENT CERTIFICATE

THIS IS TO CERTIFY THAT THIS PLAT IS BEING RECORDED UNDER THE PROVISIONS OF IDAHO CODE 50-1331 THRU 50-1333 AND THAT ALL INTERIOR MONUMENTS WILL BE SET WITHIN ONE YEAR FROM THE RECORDING DATE OF THIS PLAT.



### HEALTH CERTIFICATE

SANITARY RESTRICTIONS AS REQUIRED BY IDAHO CODE TITLE 50 CHAPTER 13 HAVE BEEN SATISFIED. SANITARY RESTRICTIONS MAY BE REIMPOSED, IN ACCORDANCE WITH IDAHO CODE TITLE 50 CHAPTER 13, SECTION 50-1326, BY THE ISSUANCE OF A CERTIFICATE OF DISAPPROVAL.

DISTRICT HEALTH DEPARTMENT, EHS

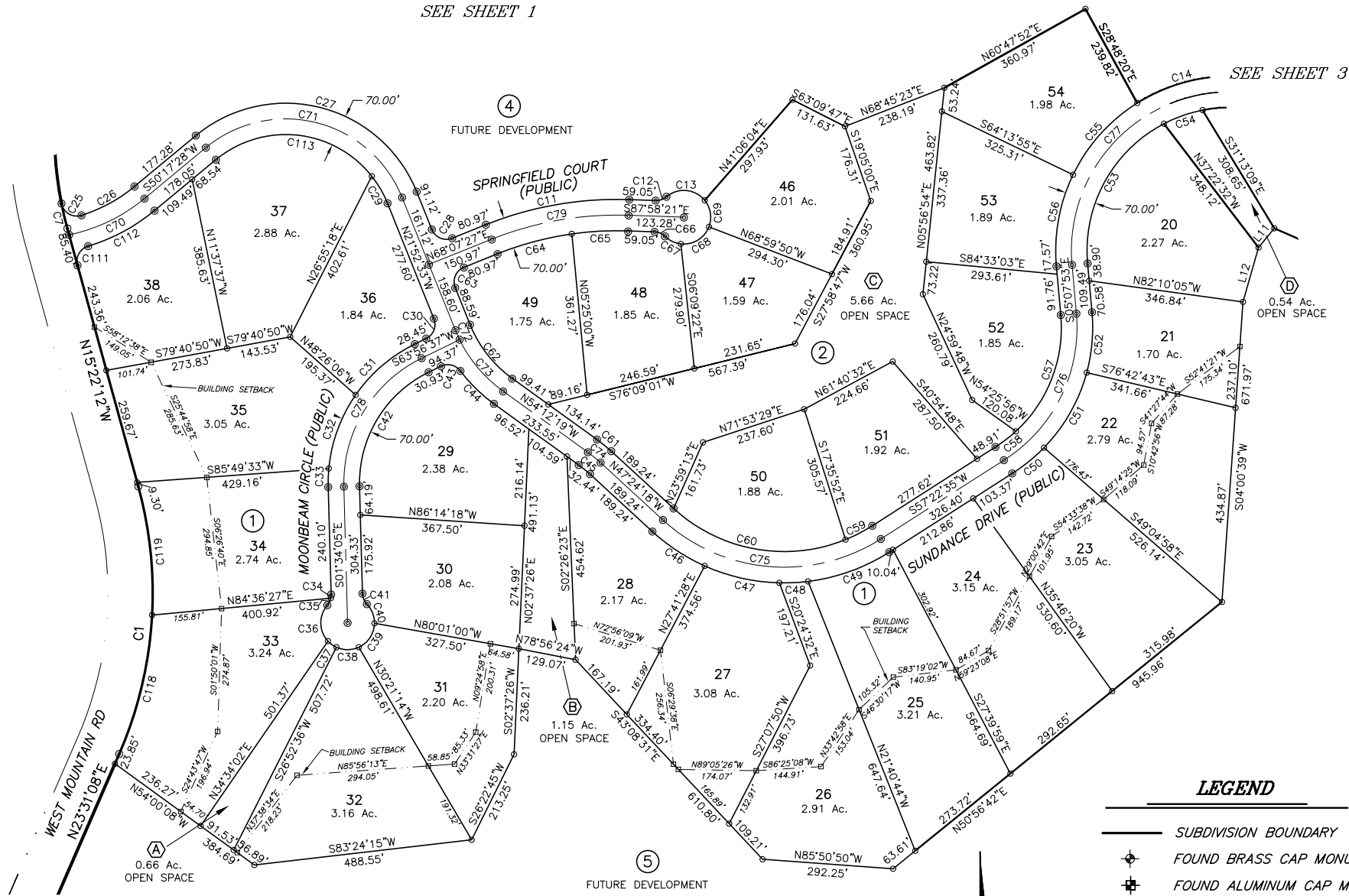
### SECESH ENGINEERING, INC.

McCall, Idaho

# WHITE CLOUD SUBDIVISION PHASE 1

Located in  
the SE 1/4 Sec. 24, NE 1/4 Sec. 25 T.18N., R.2E., and  
the SW 1/4 Sec. 19, NW 1/4 Sec. 30 T.18N., R.3E., B.M.  
Valley County, Idaho

SEE SHEET 1



SEE SHEET 1

LINE TABLE		
LINE	LENGTH	BEARING
L11	55.54	S39°10'00"W
L12	126.38	S15°56'57"W

### LEGEND

- SUBDIVISION BOUNDARY
- ⊕ FOUND BRASS CAP MONUMENT
- ⊕ FOUND ALUMINUM CAP MONUMENT
- ⊙ FOUND 5/8" IRON PIN
- ⊙ SET 5/8" X 30" REBAR MKD LS 8577
- FOUND 1/2" IRON PIN
- SET 1/2" X 24" REBAR MKD LS 8577
- ANGLE POINT - NOTHING SET
- EASEMENT LINE
- ① BLOCK NUMBER
- (A) OPEN SPACE PARCEL

SCALE: 1" = 200'

CURVE TABLE						
CURVE	RADIUS	LENGTH	TANGENT	DELTA	BEARING	CHORD
C1	900.00	610.87	317.73	38°53'20"	N04°04'28"E	599.21
C7	800.00	57.26	28.64	4°06'05"	S13°19'10"E	57.25
C11	785.00	327.50	166.17	23°54'13"	S80°04'33"W	325.13
C12	35.00	25.98	13.62	42°32'13"	N70°45'33"E	25.39
C13	60.00	95.72	61.49	91°24'06"	N84°48'30"W	85.88
C25	35.00	58.80	39.05	96°15'41"	S59°23'58"E	52.13
C26	350.00	135.48	68.60	22°10'43"	N61°22'50"E	134.64
C27	315.00	593.24	432.80	107°54'17"	N75°49'42"W	509.37
C28	35.00	54.98	35.00	90°00'00"	S66°52'33"E	49.50
C29	245.00	70.28	35.39	16°26'12"	N30°05'39"W	70.04
C30	35.00	52.42	32.54	85°49'10"	N21°02'02"E	47.66
C31	345.00	175.93	89.92	29°13'05"	S49°20'04"W	174.03
C32	345.00	176.81	90.39	29°21'47"	S20°02'38"W	174.88
C33	345.00	41.73	20.89	6°55'50"	S01°53'50"W	41.71
C34	35.00	8.21	4.12	13°25'55"	N05°08'52"E	8.19
C35	35.00	17.78	9.09	29°06'18"	N26°24'58"E	17.59
C36	60.00	87.81	53.89	83°51'11"	S00°57'28"E	80.18
C37	60.00	23.72	12.02	22°39'02"	S54°12'35"E	23.57
C38	60.00	51.41	27.40	49°05'20"	N89°55'14"E	49.85
C39	60.00	67.44	37.78	64°23'50"	N33°10'39"E	63.94
C40	60.00	47.21	24.90	45°05'02"	N21°33'47"W	46.00
C41	35.00	25.98	13.62	42°32'13"	S22°50'12"E	25.39
C42	275.00	314.43	176.93	65°30'42"	S31°11'16"W	297.58
C43	35.00	48.46	29.02	79°20'08"	N76°23'19"W	44.68
C44	345.00	105.28	53.05	17°29'04"	S45°27'47"E	104.87
C45	275.00	32.61	16.32	6°47'36"	N50°48'07"W	32.59
C46	435.00	140.50	70.87	18°30'21"	S56°39'27"E	139.89
C47	435.00	172.09	87.18	22°39'59"	S77°14'37"E	170.97
C48	435.00	64.31	32.21	8°28'13"	N87°11'17"E	64.25
C49	435.00	194.18	98.74	25°34'36"	N70°09'52"E	192.57
C50	385.00	91.48	45.96	13°36'51"	N50°58'26"E	91.27
C51	385.00	195.09	99.69	29°02'00"	N29°39'00"E	193.01
C52	385.00	136.17	68.80	20°15'54"	N05°00'04"E	135.46
C53	320.00	377.12	213.91	67°31'24"	S28°38'35"W	355.67
C54	320.00	91.92	46.28	16°27'31"	S70°38'03"W	91.61
C55	390.00	217.80	111.82	31°59'53"	S41°46'01"W	214.98
C56	390.00	210.41	107.83	30°54'40"	S10°18'45"W	207.86
C57	315.00	288.38	155.18	52°27'11"	N21°05'42"E	278.41
C58	315.00	57.74	28.95	10°30'07"	N52°34'22"E	57.66
C59	365.00	67.47	33.83	10°35'27"	N62°40'18"E	67.37
C60	365.00	411.71	230.87	64°37'42"	S79°43'08"E	390.23
C61	345.00	40.91	20.48	6°47'39"	N50°48'08"W	40.89
C62	275.00	155.15	79.70	32°19'28"	S38°02'35"E	153.10
C63	35.00	54.98	35.00	90°00'00"	S23°07'27"W	49.50
C64	715.00	172.13	86.48	13°47'36"	S75°01'15"W	171.71
C65	715.00	126.17	63.25	10°06'36"	S86°58'21"W	126.00
C66	35.00	25.98	13.62	42°32'13"	N66°42'14"W	25.39
C67	60.00	39.89	20.72	38°05'46"	S64°29'01"E	39.16
C68	60.00	79.03	46.43	75°27'56"	N58°44'08"E	73.44
C69	60.00	62.95	34.72	60°06'38"	N09°03'09"W	60.10
C70	385.00	188.65	96.26	28°04'29"	N64°19'43"E	186.77
C71	280.00	526.60	383.67	107°45'24"	N75°45'15"W	452.35
C72	310.00	22.92	11.46	4°14'08"	S23°59'54"E	22.91
C73	310.00	151.98	77.55	28°05'22"	S40°09'38"E	150.46
C74	310.00	36.76	18.40	6°47'38"	N50°48'07"W	36.74
C75	400.00	525.12	308.14	75°13'05"	S85°00'53"E	488.22
C76	350.00	384.43	214.20	62°55'56"	N26°20'05"E	365.40
C77	355.00	603.90	404.57	97°28'04"	S43°36'53"W	533.67
C78	310.00	354.45	199.44	65°30'42"	S31°11'16"W	335.46
C111	35.00	54.22	34.25	88°45'05"	S29°00'21"W	48.96
C112	420.00	169.26	85.79	23°05'25"	N61°50'11"E	168.12
C113	245.00	390.47	250.69	91°18'53"	N83°58'12"W	350.43
C118	900.00	320.63	162.03	20°24'43"	N13°18'46"E	318.94
C119	900.00	290.24	146.39	18°28'37"	N06°07'54"W	288.98

**SECESH ENGINEERING, INC.**  
McCall, Idaho